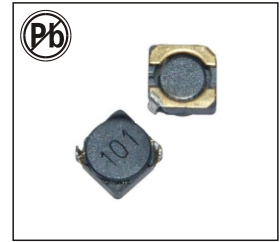


# MAGNETIC SHIELDED SURFACE-MOUNT POWER INDUCTORS

## SDRH6D38 SERIES



### FEATURES:

- Magnetically Shielded Structure
- Low DC Resistance
- Large current up to 3.2A
- Excellent Mechanical Strength
- High Reliability and Excellent Solderability
- Low and square Profile
- High heat resistance

### COMMON APPLICATIONS:

- VCRs, Notebook, DC/DC Converters
- Video Digital Cameras
- Communication System
- Automotive Systems Power supplier
- LCD PDP Televisions
- Hard Disk Drives, Topset, XDSL
- Network Systems
- Computer Peripheral Equipment

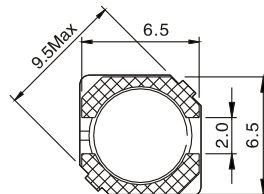
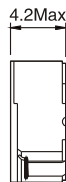
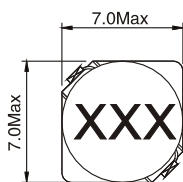
### ELECTRICAL CHARACTERISTICS:

Part Number	L μ H	Test Freq KHz	DCR mΩ Max	IDC Max A
SDRH6D38-3R3□	3.3	10	20	3.20
SDRH6D38-5R0□	5.0	10	24	2.60
SDRH6D38-6R2□	6.2	10	27	2.30
SDRH6D38-7R4□	7.4	10	31	2.10
SDRH6D38-8R7□	8.7	10	34	2.00
SDRH6D38-100□	10	10	44	1.80
SDRH6D38-120□	12	10	53	1.70
SDRH6D38-150□	15	10	57	1.45
SDRH6D38-180□	18	10	92	1.40
SDRH6D38-220□	22	10	96	1.20
SDRH6D38-270□	27	10	109	1.10
SDRH6D38-330□	33	10	124	1.00
SDRH6D38-390□	39	10	138	0.95
SDRH6D38-470□	47	10	155	0.85
SDRH6D38-560□	56	10	202	0.75
SDRH6D38-680□	68	10	234	0.70
SDRH6D38-820□	82	10	324	0.62
SDRH6D38-101□	100	10	358	0.58

□:1. K= ± 10%,M= ± 20%,N= ± 30%

### TECHNICAL INFORMATION & PHYSICAL CHARACTERISTICS:

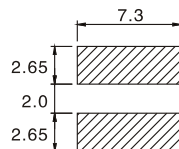
DIMENSIONS IN:mm



CONSTRUCTION



LAND PATTERNS



- Inductor Testing: HP4284A (Equivalent acceptable)
- DCR:QuadTech 1880 Milliohmmer
- Q- HP4342A – SRF-HP4191A
- IDCMax current is decreased 10% against its initial value
- Operating temperature: -40°C to +105°C
- Storage Temperature: -40°C to +105°C
- Solder methods: Vapor Phase,Infrared Reflow
- Resistance to soldering heat:260°C for 10 seconds
- Solvent resistance: Conforms to MIL-STD-202E
- Marking: Inductance & Tolerance

Note:All specifications subject to change without notice.