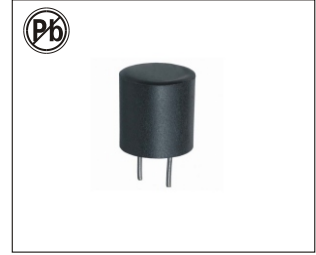


DIP SHIELDED POWER INDUCTORS

LGS1213B SERIES



FEATURES:

- Excellent solderability and heat resistance
- Magnetically shielded type inductor, possible to decrease reflection noise
- Available for high density mount due to compact size
- Accomplished low total harmonics distortion as compared

APPLICATIONS:

- Suitable as choke for digital amp
- Car audio
- LCD and PDP TV
- 5.1ch Home theater

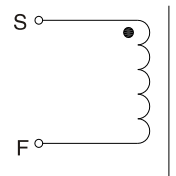
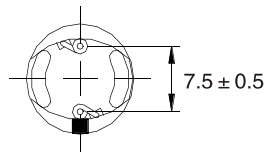
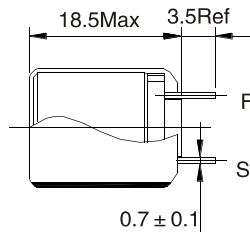
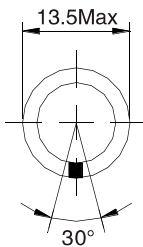
ELECTRICAL CHARACTERISTICS:

Part Number	L uH $\pm 25\%$	DCR m Ω Max	Rated current A Max	Allowable current A Max
LGS1213B-100Y	10	30	10.0	8.0
LGS1213B-120Y	12	30	9.0	7.0
LGS1213B-150Y	15	30	8.0	6.0
LGS1213B-220Y	22	50	6.5	5.5
LGS1213B-330Y	33	100	5.0	5.0
LGS1213B-470Y	47	100	4.5	4.0

Note: 1. K= $\pm 10\%$, M= $\pm 20\%$, N= $\pm 30\%$

PHYSICAL CHARACTERISTICS: WINDING:

Dimension: mm



TECHNICAL INFORMATION:

- Testing: (Equivalent acceptable) Inductance: HP4342A, HP4284A
RDC: QuadTech 1880 Milliohmmeter
Q- HP4342A - SRF-HP4191A
 - Operating temperature: -40°C to $+105^{\circ}\text{C}$
 - Storage Temperature: -40°C to $+105^{\circ}\text{C}$
 - Solder methods: Vapor Phase, Infrared Reflow
 - Resistance to soldering heat: 260°C for 10 seconds
 - Solvent resistance: Conforms to MIL-STD-202E
 - Marking: Inductance & Tolerance
- Note: All specifications subject to change without notice.

DIP SHIELDED POWER INDUCTORS

LGS1218B SERIES



FEATURES:

- Excellent solderability and heat resistance
- Magnetically shielded type inductor, possible to decrease reflection noise
- Available for high density mount due to compact size
- Accomplished low total harmonics distortion as compared

APPLICATIONS:

- Suitable as choke for digital amp
- Car audio
- LCD and PDP TV
- 5.1ch Home theater

ELECTRICAL CHARACTERISTICS:

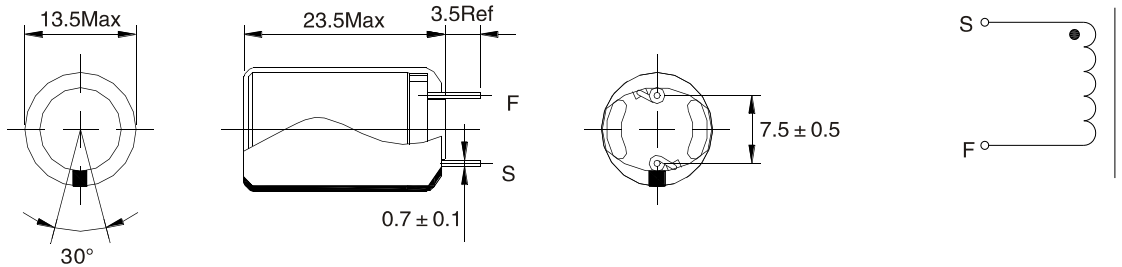
Part Number	L uH $\pm 25\%$	DCR m Ω Max	Rated current A Max	Allowable current A Max
LGS1218B-100Y	10	30	10.0	10.0
LGS1218B-120Y	12	30	9.5	8.5
LGS1218B-150Y	15	30	8.5	8.0
LGS1218B-220Y	22	50	6.5	7.0
LGS1218B-330Y	33	50	5.0	6.0
LGS1218B-470Y	47	100	4.5	5.0

Note: 1. K= $\pm 10\%$, M= $\pm 20\%$, N= $\pm 30\%$

PHYSICAL CHARACTERISTICS:

WINDING:

Dimension: mm

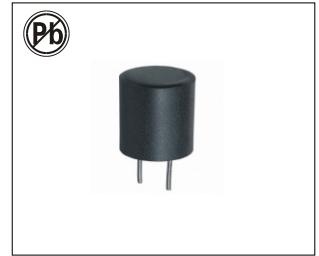


TECHNICAL INFORMATION:

- Testing: (Equivalent acceptable) Inductance: HP4342A, HP4284A
RDC: QuadTech 1880 Milliohm meter
Q- HP4342A - SRF-HP4191A
 - Operating temperature: -40°C to $+105^{\circ}\text{C}$
 - Storage Temperature: -40°C to $+105^{\circ}\text{C}$
 - Solder methods: Vapor Phase, Infrared Reflow
 - Resistance to soldering heat: 260°C for 10 seconds
 - Solvent resistance: Conforms to MIL-STD-202E
 - Marking: Inductance & Tolerance
- Note: All specifications subject to change without notice.

DIP SHIELDED POWER INDUCTORS

LGS1619 SERIES



FEATURES:

- Excellent solderability and heat resistance
- Magnetically shielded type inductor, possible to decrease reflection noise
- Available for high density mount due to compact size
- Accomplished low total harmonics distortion as compared

APPLICATIONS:

- Suitable as choke for digital amp
- Car audio
- LCD and PDP TV
- 5.1ch Home theater

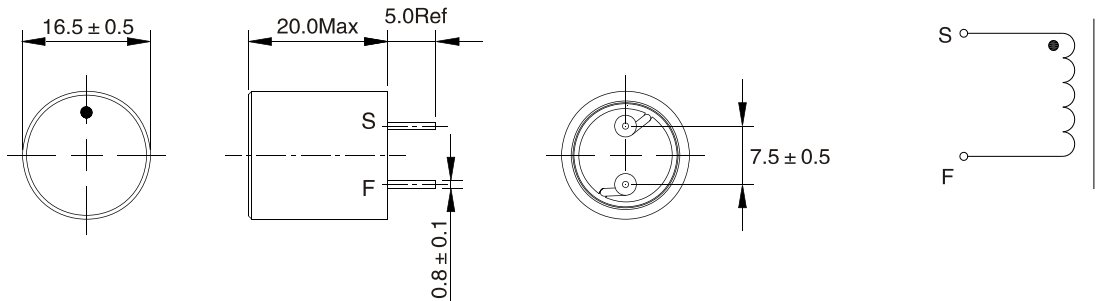
ELECTRICAL CHARACTERISTICS:

Part Number	L uH $\pm 25\%$	DCR m Ω Max	Rated current A Max	Allowable current A Max
LGS1619-100Y	10	8.5	10	12
LGS1619-120Y	12	10	9	11
LGS1619-150Y	15	12	8	10.5
LGS1619-220Y	22	16	6.5	8.5
LGS1619-330Y	33	22	5	8
LGS1619-470Y	47	30	3.5	7

Note: 1. K= $\pm 10\%$, M= $\pm 20\%$, N= $\pm 30\%$

PHYSICAL CHARACTERISTICS: WINDING:

Dimension: mm



TECHNICAL INFORMATION:

- Testing: (Equivalent acceptable) Inductance: HP4342A, HP4284A
RDC: QuadTech 1880 Milliohm meter
Q- HP4342A - SRF-HP4191A
 - Operating temperature: -40°C to $+105^{\circ}\text{C}$
 - Storage Temperature: -40°C to $+105^{\circ}\text{C}$
 - Solder methods: Vapor Phase, Infrared Reflow
 - Resistance to soldering heat: 260°C for 10 seconds
 - Solvent resistance: Conforms to MIL-STD-202E
 - Marking: Inductance & Tolerance
- Note: All specifications subject to change without notice.

DIP SHIELDED POWER INDUCTORS

LGS1622 SERIES



FEATURES:

- Excellent solderability and heat resistance
- Magnetically shielded type inductor, possible to decrease reflection noise
- Available for high density mount due to compact size
- Accomplished low total harmonics distortion as compared

APPLICATIONS:

- Suitable as choke for digital amp
- Car audio
- LCD and PDP TV
- 5.1ch Home theater

ELECTRICAL CHARACTERISTICS:

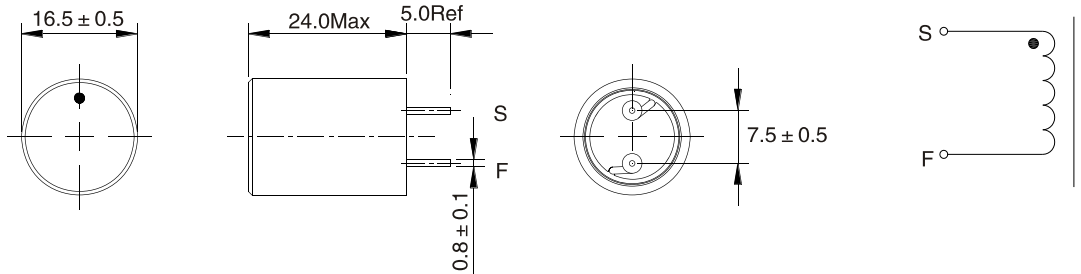
Part Number	L uH $\pm 25\%$	DCR m Ω Max	Rated current A Max	Allowable current A Max
LGS1622-100Y	10	10	12	11
LGS1622-120Y	12	12	11	10.5
LGS1622-150Y	15	15	10	10
LGS1622-220Y	22	18	7	9.5
LGS1622-330Y	33	20	6	9
LGS1622-470Y	47	30	5	8

Note: 1. K= $\pm 10\%$, M= $\pm 20\%$, N= $\pm 30\%$

PHYSICAL CHARACTERISTICS:

WINDING:

Dimension: mm



TECHNICAL INFORMATION:

- Testing: (Equivalent acceptable) Inductance: HP4342A, HP4284A
RDC: QuadTech 1880 Milliohm meter
Q- HP4342A - SRF-HP4191A
 - Operating temperature: -40°C to $+105^{\circ}\text{C}$
 - Storage Temperature: -40°C to $+105^{\circ}\text{C}$
 - Solder methods: Vapor Phase, Infrared Reflow
 - Resistance to soldering heat: 260°C for 10 seconds
 - Solvent resistance: Conforms to MIL-STD-202E
 - Marking: Inductance & Tolerance
- Note: All specifications subject to change without notice.

DIP SHIELDED POWER INDUCTORS

LGS1622B SERIES



FEATURES:

- Excellent solderability and heat resistance
- Magnetically shielded type inductor, possible to decrease reflection noise
- Available for high density mount due to compact size
- Accomplished low total harmonics distortion as compared

APPLICATIONS:

- Suitable as choke for digital amp
- Car audio
- LCD and PDP TV
- 5.1ch Home theater

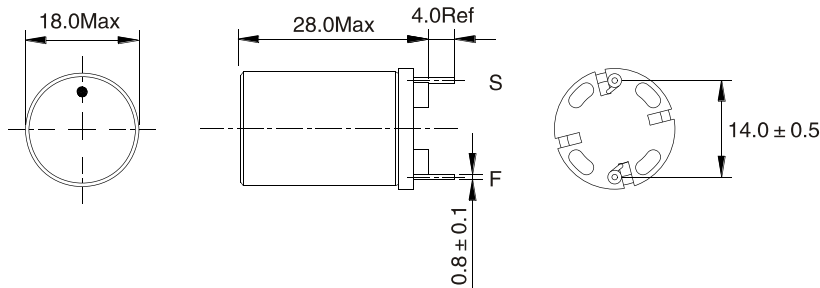
ELECTRICAL CHARACTERISTICS:

Part Number	L uH $\pm 25\%$	DCR m Ω Max	Rated current A Max	Allowable current A Max
LGS1622B-100Y	10	20	15	9
LGS1622B-120Y	12	22	14	8.5
LGS1622B-150Y	15	25	12	8
LGS1622B-220Y	22	30	11	7.5
LGS1622B-330Y	33	40	10	7
LGS1622B-470Y	47	55	8	6

Note: 1. K= $\pm 10\%$, M= $\pm 20\%$, N= $\pm 30\%$

PHYSICAL CHARACTERISTICS: WINDING:

Dimension: mm



TECHNICAL INFORMATION:

- Testing: (Equivalent acceptable) Inductance: HP4342A, HP4284A
RDC: QuadTech 1880 Milliohm meter
Q- HP4342A - SRF-HP4191A
 - Operating temperature: -40°C to $+105^{\circ}\text{C}$
 - Storage Temperature: -40°C to $+105^{\circ}\text{C}$
 - Solder methods: Vapor Phase, Infrared Reflow
 - Resistance to soldering heat: 260°C for 10 seconds
 - Solvent resistance: Conforms to MIL-STD-202E
 - Marking: Inductance & Tolerance
- Note: All specifications subject to change without notice.