

Multilayer Chip Large Current Bead SBLxxxxxW Series

Features 特点

- Multilayer monolithic construction yields high reliability

独石结构、高可靠性

- A unique terminal electrode structure ensures high

permissible current, 6A max.

特别的设计可承受最大 6A 的电流

- High impedance over a wide frequency range

在较宽的频段具有高阻抗



Applications 应用

- Video equipment, audio equipment 视频音频设备
- Automotive electrical equipment 电气自动化设备
- Communication equipment 通讯设备
- OA equipment and other OA 设备及其它领域

Product Identification 产品标识

SBL 201209 W 121

① ② ③ ④

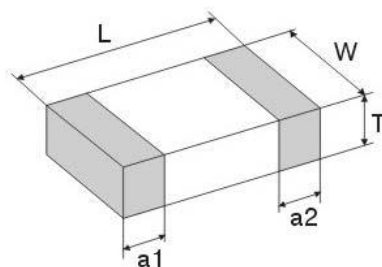
① Series name 系列名称

② Dimension 产品尺寸 L×W×T: 【201209: 2.0mm×1.2 mm×0.9mm】

③ Material code 材料代码

④ Impedance 阻抗: 【100=10Ω 101=100Ω 102=1000Ω】

Shapes And Dimensions 外形及尺寸示意图



Type	Dimensions (mm) [inch]			
	L	W	T	a1, a2
100505 [0402]	1.00±0.15 [0.04±0.006]	0.50±0.15 [0.02±0.006]	0.50±0.15 [0.02±0.006]	0.25±0.10 [0.01±0.004]
160808 [0603]	1.60±0.20 [0.063±0.008]	0.80±0.20 [0.031±0.008]	0.80±0.20 [0.031±0.008]	0.30±0.20 [0.012±0.008]
201209 [0805]	2.00±0.20 [0.079±0.008]	1.20±0.20 [0.049±0.008]	0.90±0.20 [0.035±0.008]	0.50±0.30 [0.02±0.012]
321609 [1206]	3.20±0.20 [0.126±0.008]	1.60±0.20 [0.063±0.008]	0.90±0.20 [0.035±0.008]	0.50±0.30 [0.02±0.012]
322513 [1210]	3.20±0.20 [0.126±0.008]	2.50±0.20 [0.098±0.008]	1.30±0.20 [0.051±0.008]	0.50±0.30 [0.02±0.012]
451616 [1806]	4.50±0.20 [0.180±0.008]	1.60±0.20 [0.063±0.008]	1.60±0.20 [0.063±0.008]	0.50±0.30 [0.02±0.012]
453215 [1812]	4.50±0.20 [0.180±0.008]	3.20±0.20 [0.126±0.008]	1.50±0.20 [0.06±0.008]	0.50±0.30 [0.02±0.012]

Electrical Characteristics 电气性能

SBL100505W Series

Part Number	Impedance (Ω)	Z Test Freq. (MHz)	RDC(Ω) Max.	I _r (mA) Max.
SBL100505W-000	0~15	100	0.04	800
SBL100505W-050	0~15	100	0.04	800
SBL100505W-070	0~11	100	0.04	800
SBL100505W-090	5~13	100	0.04	800
SBL100505W-110	7~15	100	0.04	800
SBL100505W-150	9~21	100	0.04	800
SBL100505W-190	12~25	100	0.06	700
SBL100505W-260	26±25%	100	0.06	700
SBL100505W-310	31±25%	100	0.08	700
SBL100505W-360	36±25%	100	0.15	600
SBL100505W-600	60±25%	100	0.15	600
SBL100505W-800	80±25%	100	0.20	450
SBL100505W-121	120±25%	100	0.25	450
SBL100505W-151	150±25%	100	0.25	450
SBL100505W-181	180±25%	100	0.40	300
SBL100505W-221	220±25%	100	0.40	300
SBL100505W-301	300±25%	100	0.50	300
SBL100505W-501	500±25%	100	0.65	200
SBL100505W-601	600±25%	100	0.70	200
SBL100505W-801	800±25%	100	0.90	200
SBL100505W-102	1000±25%	100	1.00	200

SBL160808W Series

Part Number	Impedance (Ω)	Z Test Freq. (MHz)	RDC(Ω) Max.	I _r (mA) Max.
SBL160808W-000	0~15	100	0.08	1000
SBL160808W-050	0~15	100	0.08	1000
SBL160808W-070	0~11	100	0.08	1000
SBL160808W-090	5~13	100	0.08	1000
SBL160808W-110	7~15	100	0.08	1000
SBL160808W-150	9~21	100	0.08	1000
SBL160808W-190	12~25	100	0.08	1000
SBL160808W-260	26±25%	100	0.08	1000
SBL160808W-300	30±25%	100	0.08	1000
SBL160808W-310	31±25%	100	0.08	1000
SBL160808W-600	60±25%	100	0.12	1000
SBL160808W-800	80±25%	100	0.20	1000
SBL160808W-101	100±25%	100	0.20	1000
SBL160808W-121	120±25%	100	0.20	1000

Electrical Characteristics 电气性能

SBL160808W Series

Part Number	Impedance (Ω)	Z Test Freq. (MHz)	RDC(Ω) Max.	I _r (mA) Max.
SBL160808W- 151	150 \pm 25%	100	0.25	1000
SBL160808W- 181	180 \pm 25%	100	0.25	1000
SBL160808W- 221	220 \pm 25%	100	0.30	1000
SBL160808W- 301	300 \pm 25%	100	0.30	1000
SBL160808W- 501	500 \pm 25%	100	0.40	1000
SBL160808W- 601	600 \pm 25%	100	0.40	1000
SBL160808W- 801	800 \pm 25%	100	0.55	500
SBL160808W- 102	1000 \pm 25%	100	0.55	500
SBL160808W- 122	1200 \pm 25%	100	0.65	500
SBL160808W- 152	1500 \pm 25%	100	0.75	400
SBL160808W- 182	1800 \pm 25%	100	0.75	400
SBL160808W- 202	2000 \pm 25%	100	0.90	400

SBL201209W Series

Part Number	Impedance (Ω)	Z Test Freq. (MHz)	RDC(Ω) Max.	I _r (mA) Max.
SBL201209W- 000	0~15	100	0.03	3000
SBL201209W- 050	0~15	100	0.03	3000
SBL201209W- 070	0~11	100	0.03	3000
SBL201209W- 090	5~13	100	0.03	3000
SBL201209W- 110	7~15	100	0.03	3000
SBL201209W- 150	9~21	100	0.03	3000
SBL201209W- 190	12~25	100	0.03	3000
SBL201209W- 300	30 \pm 25%	100	0.05	3000
SBL201209W- 310	31 \pm 25%	100	0.05	3000
SBL201209W- 360	36 \pm 25%	100	0.06	3000
SBL201209W- 600	60 \pm 25%	100	0.06	3000
SBL201209W- 800	80 \pm 25%	100	0.08	2500
SBL201209W- 101	100 \pm 25%	100	0.10	2500
SBL201209W- 121	120 \pm 25%	100	0.10	2000
SBL201209W- 151	150 \pm 25%	100	0.10	2000
SBL201209W- 181	180 \pm 25%	100	0.15	2000
SBL201209W- 201	200 \pm 25%	100	0.15	2000
SBL201209W- 221	220 \pm 25%	100	0.15	2000
SBL201209W- 301	300 \pm 25%	100	0.20	2000
SBL201209W- 501	500 \pm 25%	100	0.25	1500
SBL201209W- 601	600 \pm 25%	100	0.25	1500
SBL201209W- 801	800 \pm 25%	100	0.30	800
SBL201209W- 102	1000 \pm 25%	100	0.30	800
SBL201209W- 122	1200 \pm 25%	100	0.45	500
SBL201209W- 252	2500 \pm 25%	50	0.60	100

Electrical Characteristics 电气性能

SBL321609W Series

Part Number	Impedance (Ω)	Z Test Freq. (MHz)	RDC(Ω) Max.	I _r (mA) Max.
SBL321609W- 000	0~15	100	0.04	4000
SBL321609W- 050	0~15	100	0.04	4000
SBL321609W- 070	0~11	100	0.04	4000
SBL321609W- 090	5~13	100	0.05	4000
SBL321609W- 110	7~15	100	0.05	4000
SBL321609W- 150	9~21	100	0.05	3000
SBL321609W- 190	12~25	100	0.05	3000
SBL321609W- 000	26±25%	100	0.05	3000
SBL321609W- 050	28±25%	100	0.05	3000
SBL321609W- 070	30±25%	100	0.07	3000
SBL321609W- 090	31±25%	100	0.08	3000
SBL321609W- 110	50±25%	100	0.10	3000
SBL321609W- 150	60±25%	100	0.10	3000
SBL321609W- 190	70±25%	100	0.10	3000
SBL321609W- 000	80±25%	100	0.10	3000
SBL321609W- 050	100±25%	100	0.10	3000
SBL321609W- 070	120±25%	100	0.10	3000
SBL321609W- 090	150±25%	100	0.15	2500
SBL321609W- 110	180±25%	100	0.20	2500
SBL321609W- 150	220±25%	100	0.20	2500
SBL321609W- 190	300±25%	100	0.20	2000
SBL321609W- 000	500±25%	100	0.20	2000
SBL321609W- 050	600±25%	100	0.25	2000
SBL321609W- 070	800±25%	100	0.25	2000
SBL321609W- 090	1000±25%	100	0.30	2000
SBL321609W- 110	1200±25%	100	0.35	1000
SBL321609W- 150	1500±25%	50	0.45	500
SBL321609W- 190	1800±25%	50	0.60	500
SBL321609W- 190	2000±25%	50	0.70	300

SBL322513W Series

Part Number	Impedance (Ω)	Z Test Freq. (MHz)	RDC(Ω) Max.	I _r (mA) Max.
SBL322513W- 110	7~15	100	0.05	5000
SBL322513W- 190	12~25	100	0.05	5000
SBL322513W- 260	26±25%	100	0.05	5000
SBL322513W- 310	31±25%	100	0.05	5000
SBL322513W- 600	60±25%	100	0.06	4000
SBL322513W- 700	70±25%	100	0.08	3000
SBL322513W- 800	80±25%	100	0.08	3000
SBL322513W- 900	90±25%	100	0.08	3000
SBL322513W- 121	120±25%	100	0.10	3000
SBL322513W- 151	150±25%	100	0.10	3000

Electrical Characteristics 电气性能

SBL322513W Series

Part Number	Impedance (Ω)	Z Test Freq. (MHz)	RDC(Ω) Max.	I _r (mA) Max.
SBL322513W- 181	180±25%	100	0.15	3000
SBL322513W- 221	220±25%	100	0.15	3000
SBL322513W- 301	300±25%	100	0.15	3000
SBL322513W- 501	500±25%	100	0.15	2000
SBL322513W- 601	600±25%	100	0.20	2000
SBL322513W- 801	800±25%	100	0.25	2000
SBL322513W- 102	1000±25%	100	0.30	2000

SBL451616W Series

Part Number	Impedance (Ω)	Z Test Freq. (MHz)	RDC(Ω) Max.	I _r (mA) Max.
SBL451616W- 190	12~25	100	0.015	6000
SBL451616W- 260	26±25%	100	0.05	3000
SBL451616W- 310	31±25%	100	0.05	3000
SBL451616W- 600	60±25%	100	0.06	3000
SBL451616W- 750	75±25%	100	0.06	3000
SBL451616W- 800	80±25%	100	0.08	3000
SBL451616W- 900	90±25%	100	0.10	3000
SBL451616W- 121	120±25%	100	0.10	3000
SBL451616W- 151	150±25%	100	0.10	3000
SBL451616W- 221	220±25%	100	0.15	2000
SBL451616W- 301	300±25%	100	0.20	2000
SBL451616W- 501	500±25%	100	0.25	1000
SBL451616W- 601	600±25%	100	0.30	1000

SBL453215W Series

Part Number	Impedance (Ω)	Z Test Freq. (MHz)	RDC(Ω) Max.	I _r (mA) Max.
SBL453215W- 300	30±25%	100	0.06	5000
SBL453215W- 310	31±25%	100	0.06	5000
SBL453215W- 380	38±25%	100	0.06	5000
SBL453215W- 400	40±25%	100	0.06	4000
SBL453215W- 500	50±25%	100	0.06	4000
SBL453215W- 600	60±25%	100	0.06	4000
SBL453215W- 700	70±25%	100	0.06	4000
SBL453215W- 800	80±25%	100	0.08	4000
SBL453215W- 900	90±25%	100	0.08	4000
SBL453215W- 101	100±25%	100	0.08	4000
SBL453215W- 121	120±25%	100	0.08	4000
SBL453215W- 151	150±25%	100	0.10	3000
SBL453215W- 181	180±25%	100	0.12	3000
SBL453215W- 201	200±25%	100	0.12	3000
SBL453215W- 221	220±25%	100	0.15	2000

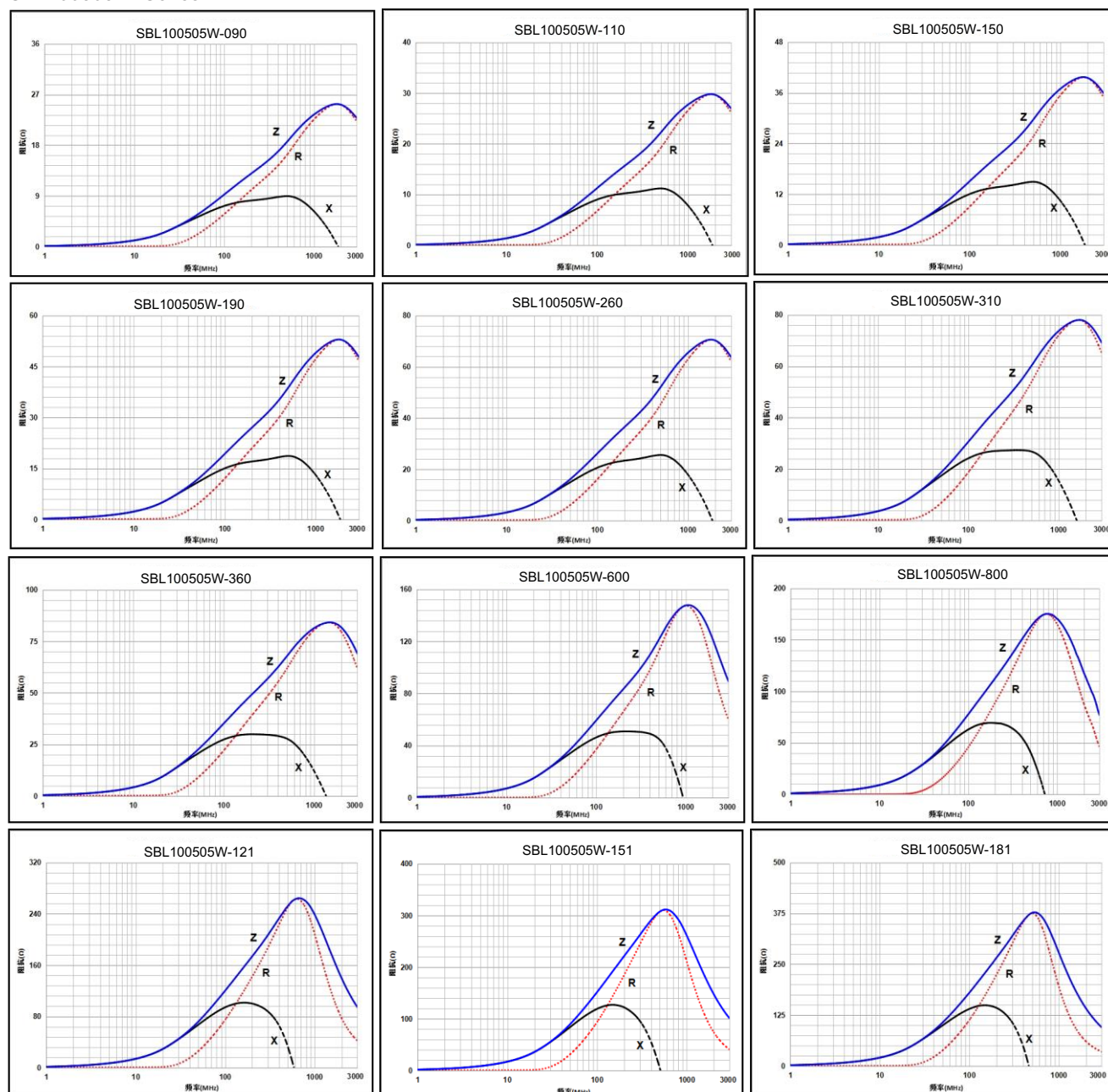
Electrical Characteristics 电气性能

SBL453215W Series

Part Number	Impedance (Ω)	Z Test Freq. (MHz)	RDC(Ω) Max.	Ir(mA) Max.
SBL453215W- 301	300 \pm 25%	100	0.15	2000
SBL453215W- 401	400 \pm 25%	100	0.20	1000
SBL453215W- 501	500 \pm 25%	100	0.20	1000
SBL453215W- 601	600 \pm 25%	100	0.25	1000
SBL453215W- 801	800 \pm 25%	100	0.30	1000
SBL453215W-102	1000 \pm 25%	100	0.35	800

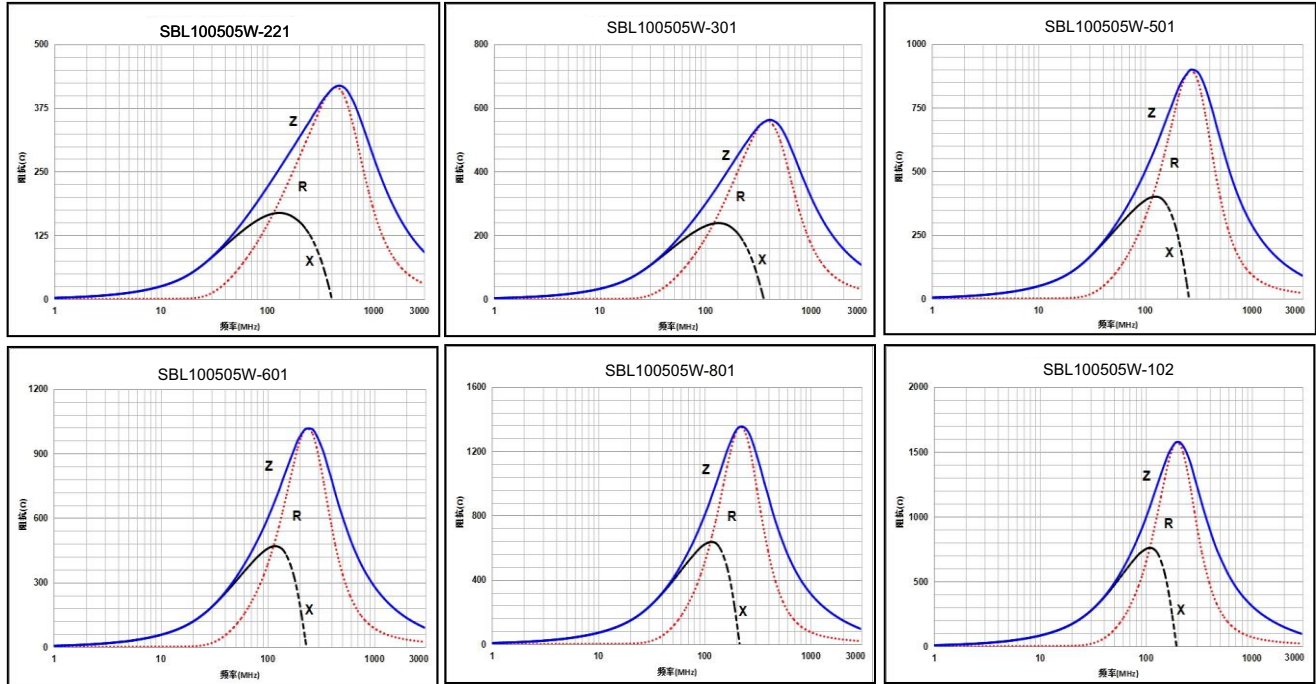
Impedance Frequency Characteristics 阻抗频率性能

SBL100505W Series

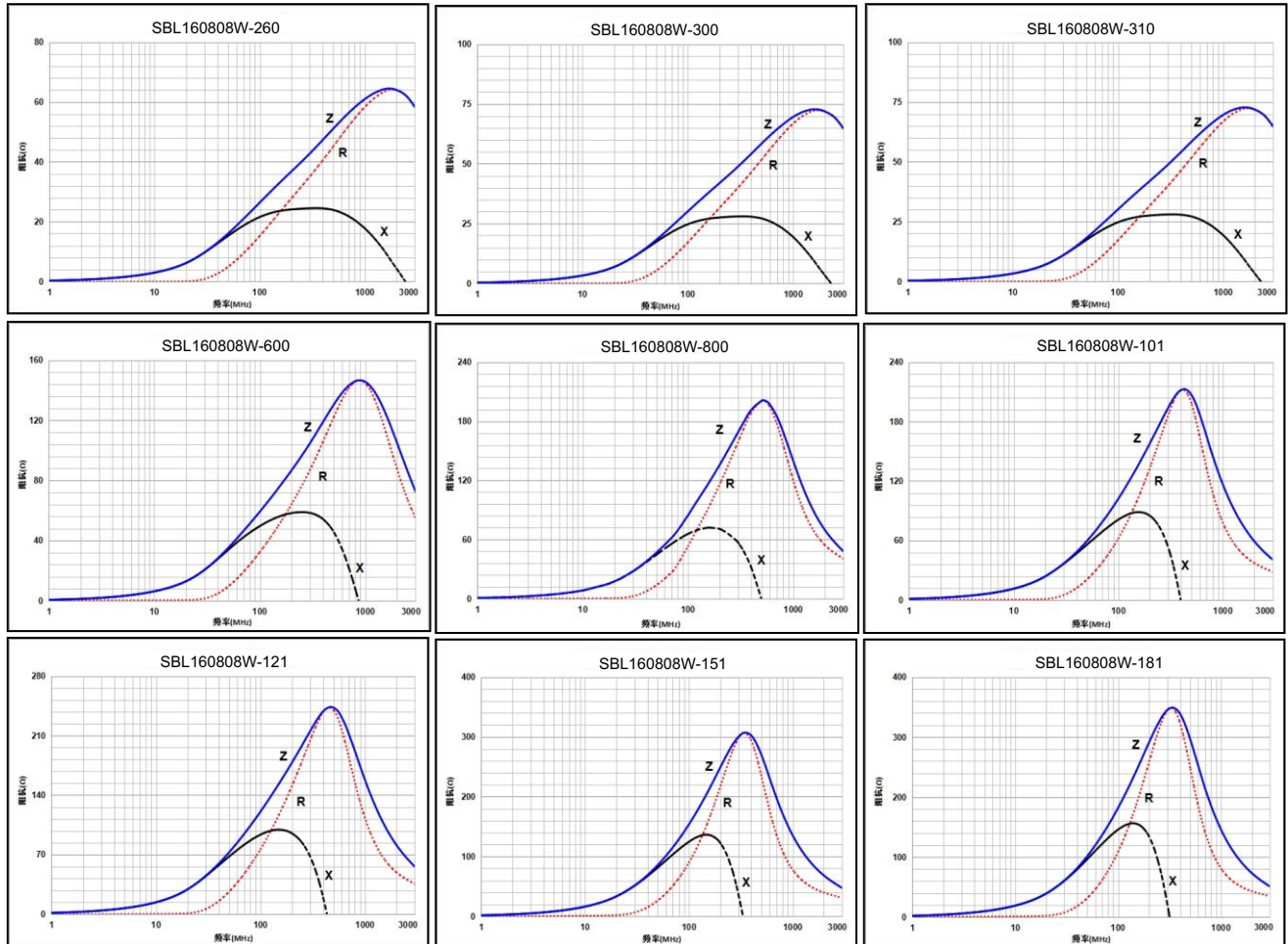


Impedance Frequency Characteristics 阻抗频率性能

SBL100505W Series

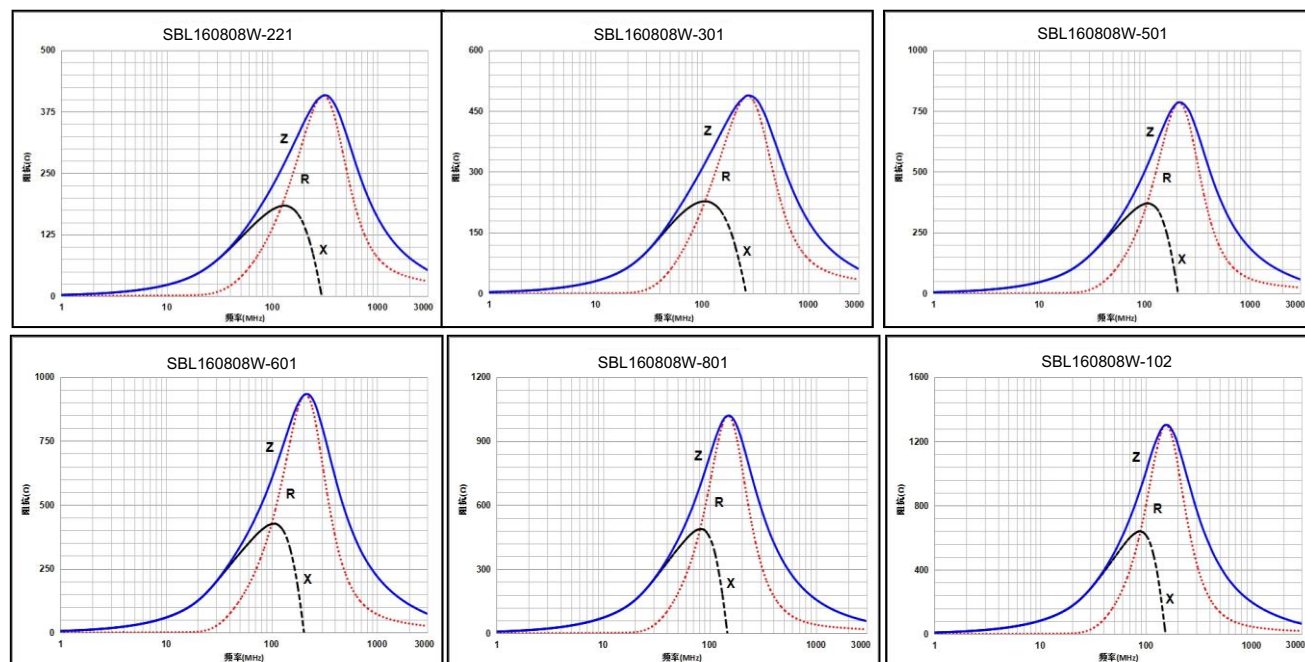


SBL160808W Series

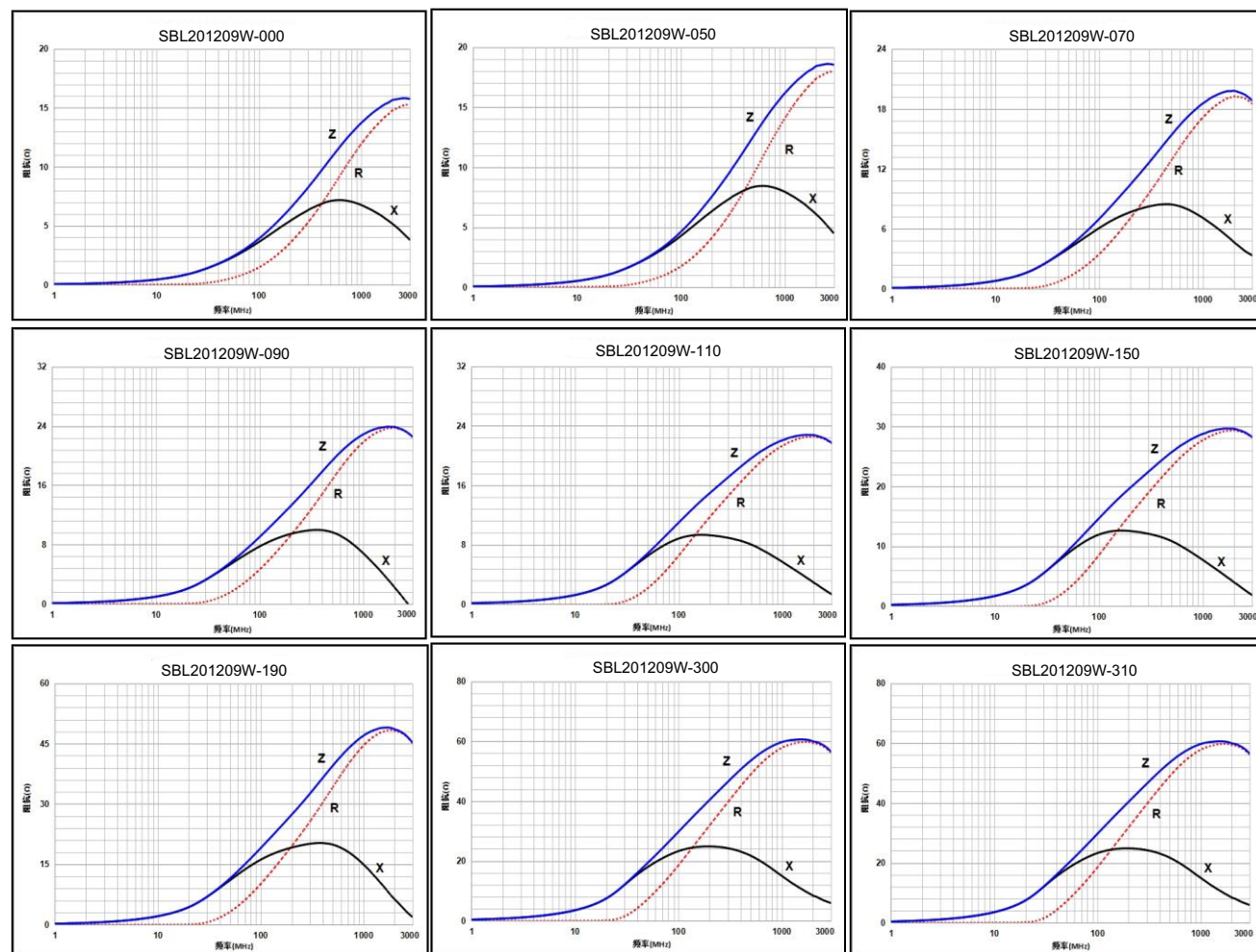


Impedance Frequency Characteristics 阻抗频率性能

SBL160808W Series

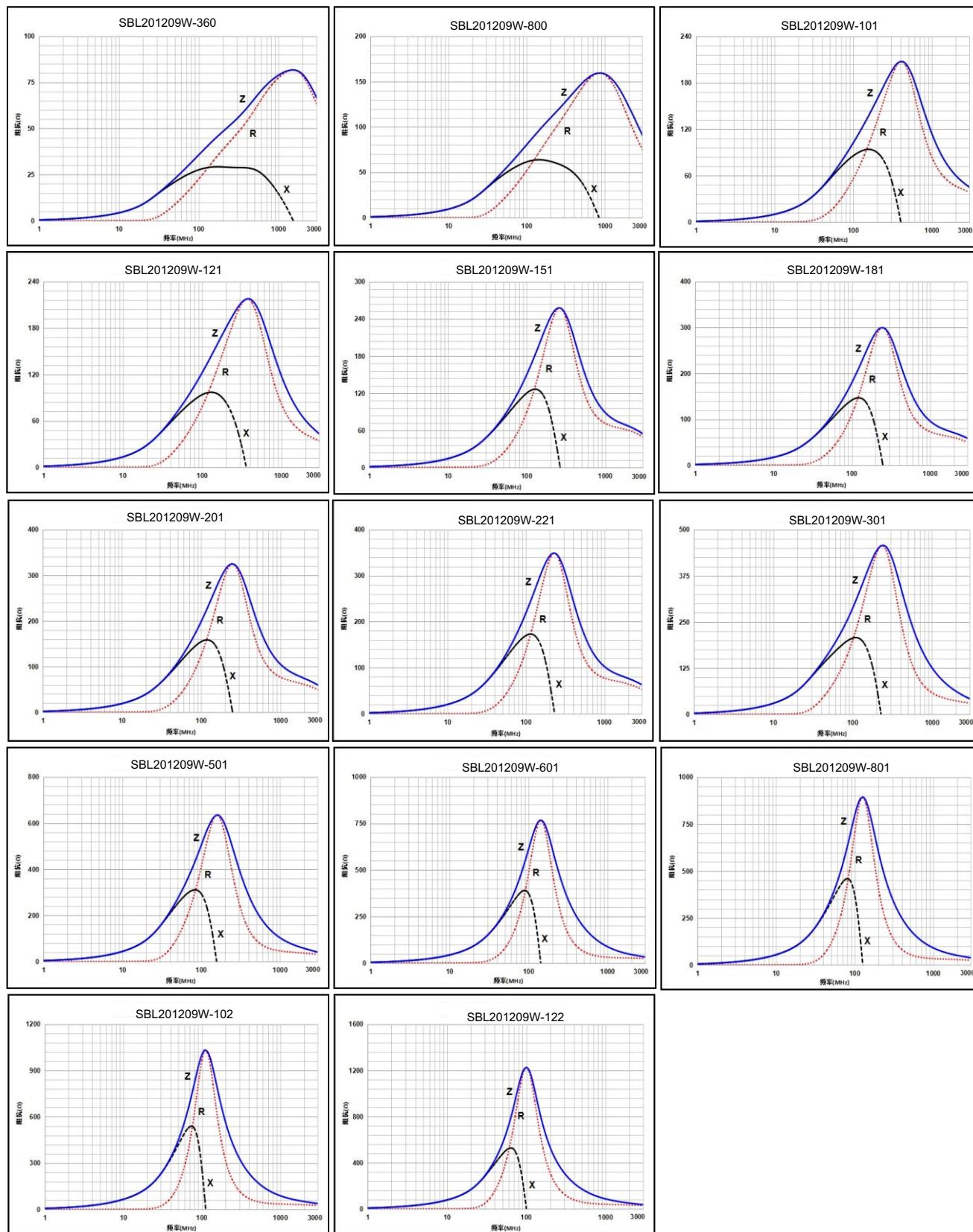


SBL201209W Series



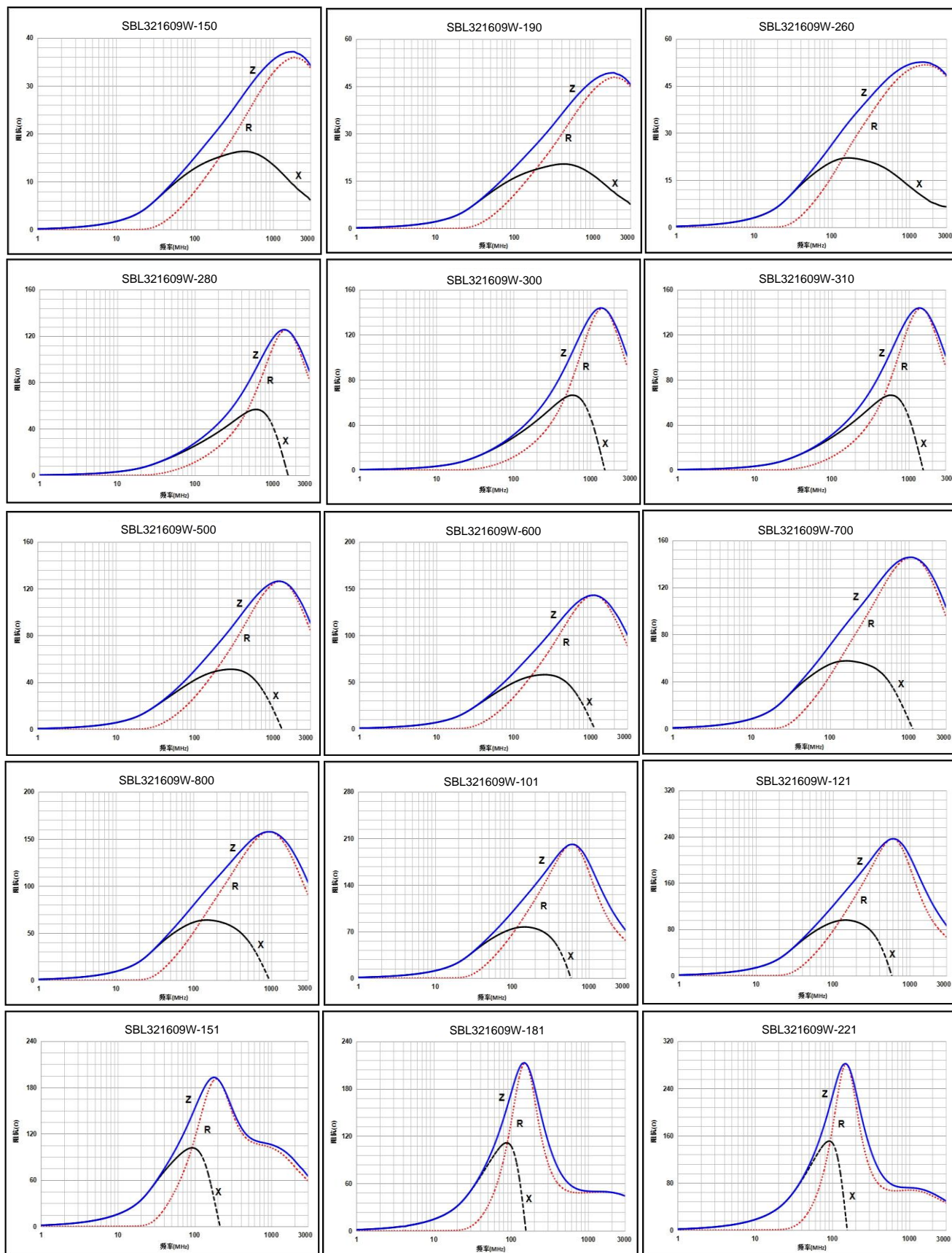
Impedance Frequency Characteristics 阻抗频率性能

SBL201209W Series



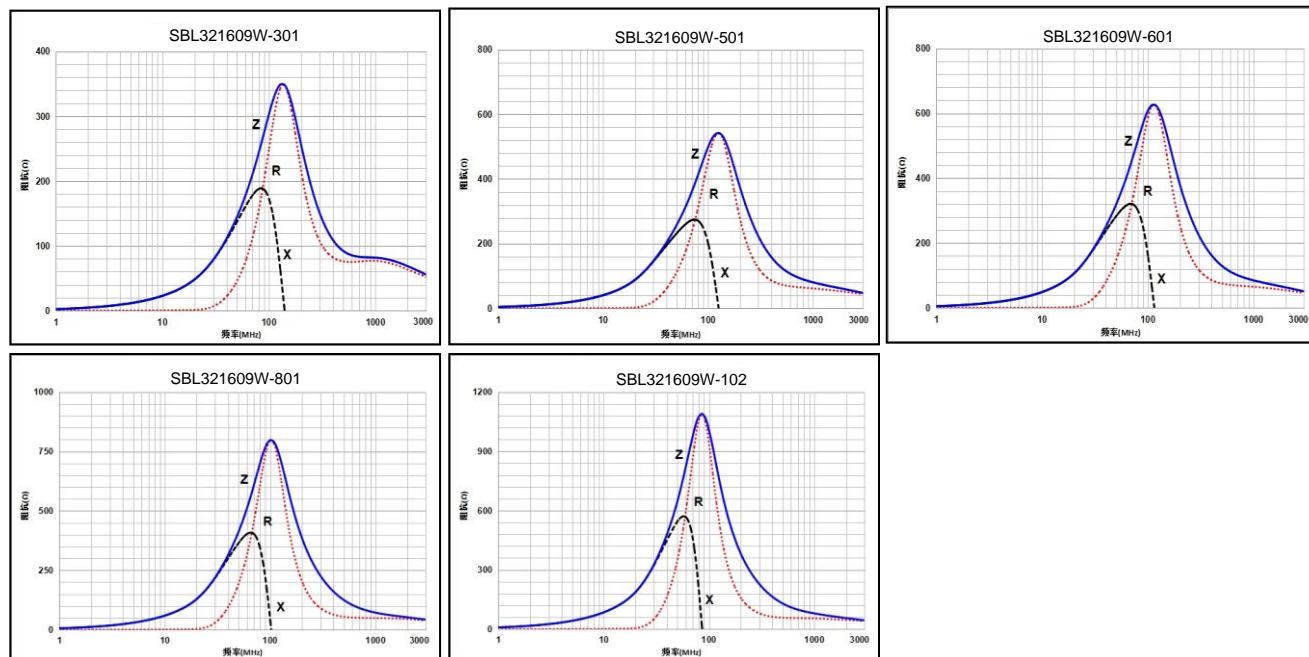
Impedance Frequency Characteristics 阻抗频率性能

SBL321609W Series

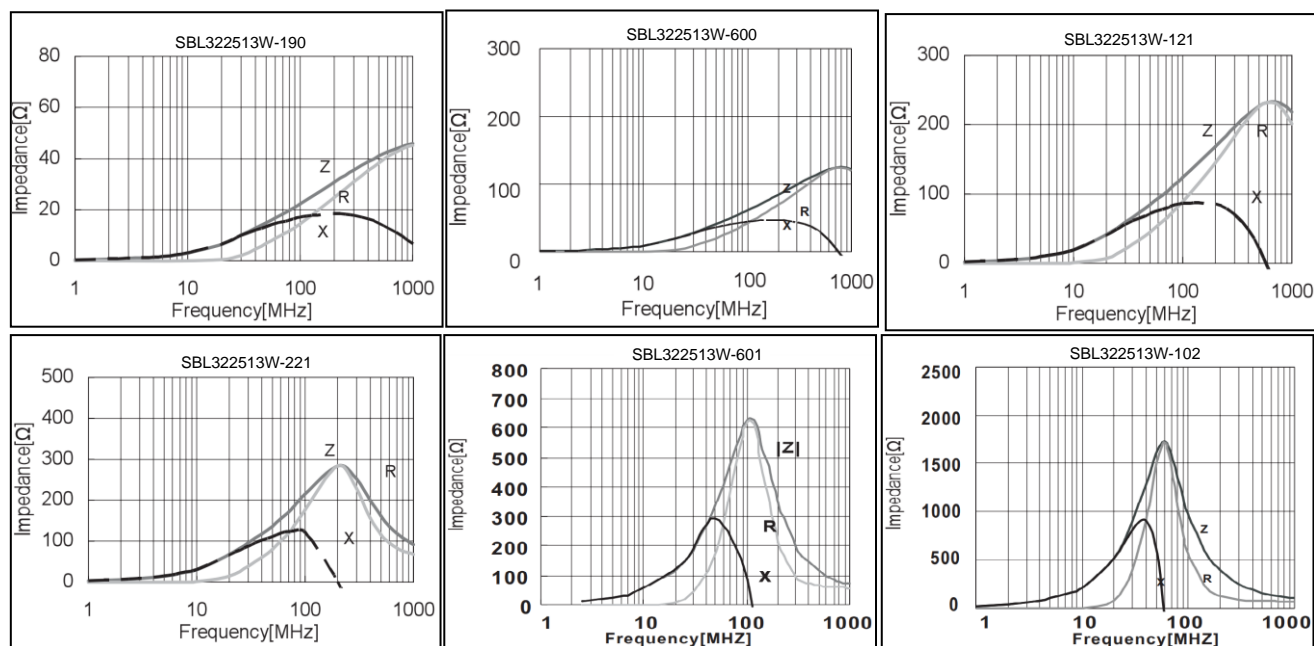


Impedance Frequency Characteristics 阻抗频率性能

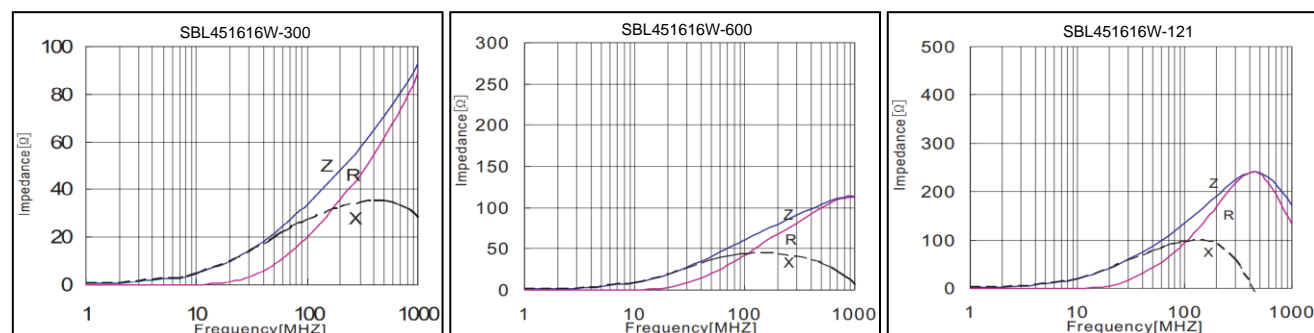
SBL321609W Series



SBL322513W Series

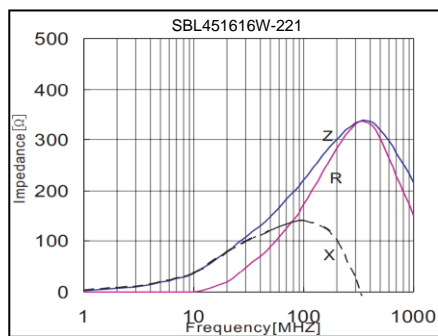


SBL451616W Series



Impedance Frequency Characteristics 阻抗频率性能

SBL451616W Series



SBL453215W Series

