



SHAANXI SHINHOM ENTERPRISE CO.,LTD

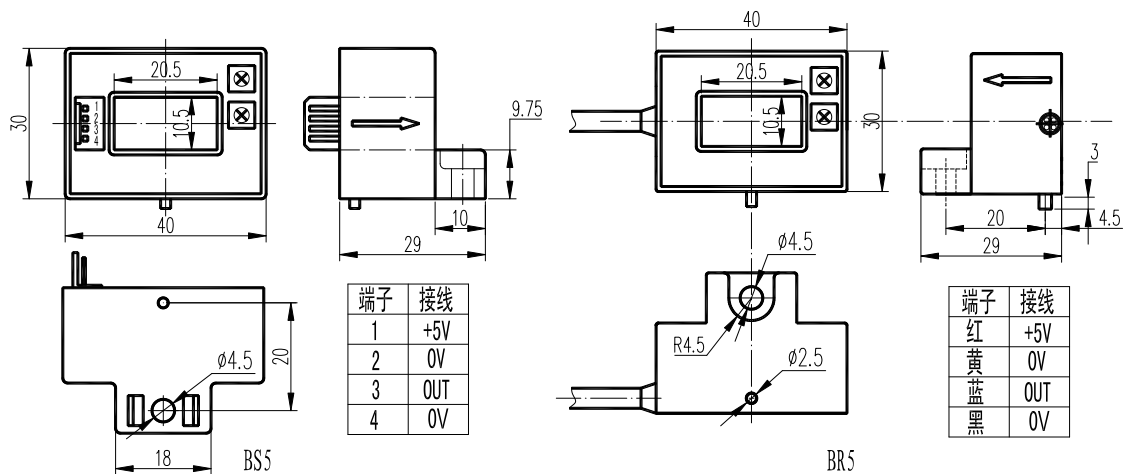
HKC-BS5/BR5 Series Hall Effect Current Sensor

HKC-BS5/BR5 series current sensor is an open loop device based on the measuring principle of the Hall Effect, with a galvanic isolation between primary and secondary circuit. It provides accurate electronic measurement of DC, AC currents.

ELECTRICAL DATA(25°C)

	HKC50BS5/BR5 HKC300BS5/BR5		HKC100BS5/BR5 HKC400BS5/BR5 HKC600BS5/BR5		HKC200BS5/BR5 HKC500BS5/BR5			
	50	100	200	300	400	500		600
Rated input current(IPN)	50	100	200	300	400	500	600	A
Current range(IPM)	100	200	400	600	800	900	900	A
Rated output voltage(VOUT)							0.625±1%	V
Zero Voltage							2.5±0.5%	V
Supply voltage(VC)							+5±5%/+12±5%	V
Offset Voltage							≤±25	mV
Magnetic dissonance voltage	≤±20						≤±15	mV
Offset Voltage drift	≤±2.0						≤±1	mV/°C
Linearity							≤±1	%FS
Response Time							≤3	μS
Insulation voltage	50Hz, 1min						2.5	KV
Operating Temperature							-40~+85	°C
Storage Temperature							-40~+105	°C

MUTING DIMENSIONS



NOTES

1. When the current will be measured goes through a sensor, the voltage will be measured at the output end. (Note: The false wiring may result in the damage of the sensor).
2. The output amplitude of the sensor can be adjusted according to users' requirements.
3. Custom design in the nominal input current and the output voltage available.