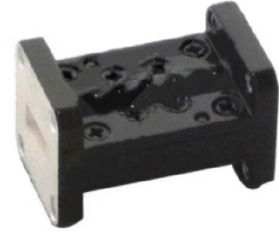


Waveguide Filter



Waveguide Bandpass Filter

ELECTRICAL CHARACTERISTICS:

Part No.	WG Type EIA	Band	Pass Band(GHz)	Rejection Band(GHz)	VSWR	IL(dB)	Material
SH-70WBPF	WR137	C	5.85-6.425	3.4-4.2	≤1.20	≤0.4	Cu
SH-84WBPF	WR112	X	7.9-8.4	7.25-7.75	≤1.20	≤0.6	Cu
SH-100WBPF	WR90	X	8-9	7.125-7.235	≤1.20	≤0.5	Cu
SH-120WBPF	WR75	Ku	11.7-12.75	14-14.5	≤1.20	≤0.3	Cu
SH-140WBPF	WR62	Ku	13.3-13.7	15.3-15.5	≤1.20	≤0.3	Cu
SH-220WBPF	WR42	Ka	20-22	30-31	≤1.25	≤0.5	Cu
SH-260WBPF	WR34	Ka	24.5-27	≤22GHz ≤20GHz	≤1.20	≤0.3	Cu
SH-320WBPF	WR28	Ka	30.5-31.3	26-28.35GHz	≤1.20	≤0.6	Cu

Waveguide High-pass Filter

ELECTRICAL CHARACTERISTICS:

Part No.	WG Type EIA	Band	Pass Band (GHz)	Rejection Band (GHz)	VSWR	IL(dB)	Isolation (dB)	Material
SH-260WHPF	WR34	Ka	25-26	16	≤1.2	≤0.2	≥80	Cu
SH-320WHPF	WR28	Ka	29-31.2	19-21	≤1.2	≤0.2	≥70	Cu

Waveguide Low-pass Filter

ELECTRICAL CHARACTERISTICS:

Part No.	WG Type EIA	Band	Pass Band (GHz)	Rejection Band (GHz)	VSWR	IL(dB)	Isolation (dB)	Material
SH-40WLFPF	WR229	C	4.5-4.8	6.725-7.025	≤1.2	≤0.3	≥55	Al
SH-120WLFPF	WR75	Ku	11.6-12.8	13.5-15	≤1.2	≤0.25	≥60	Cu
SH-220WLFPF	WR42	Ka	20.4-20.9	30-31	≤1.2	≤0.3	≥55	Cu